



# ADVANCE AND SLOW LEARNERS

**GOVERNMENT COLLEGE JAITHARI,  
DISTRICT- ANUPPUR (M.P.) INDIA**

# POLICY

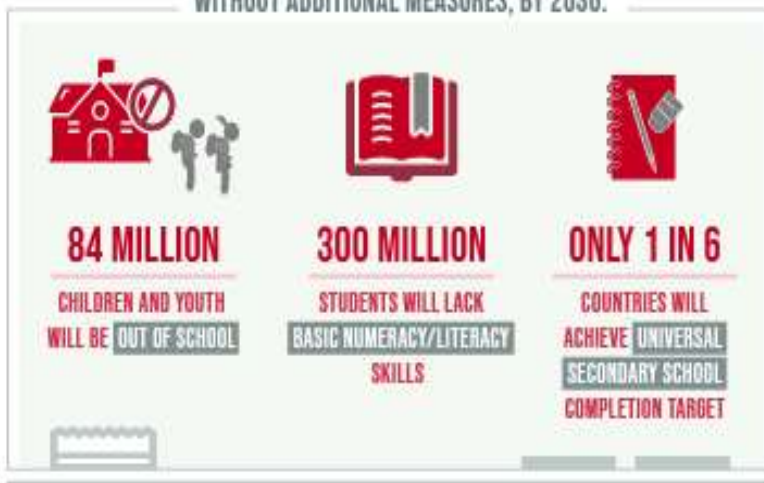


# ENSURE INCLUSIVE AND EQUITABLE QUALITY EDUCATION AND PROMOTE LIFELONG LEARNING OPPORTUNITIES FOR ALL

DESPITE SLOW PROGRESS,

## THE WORLD IS FALLING FAR BEHIND IN ACHIEVING QUALITY EDUCATION

WITHOUT ADDITIONAL MEASURES, BY 2030:

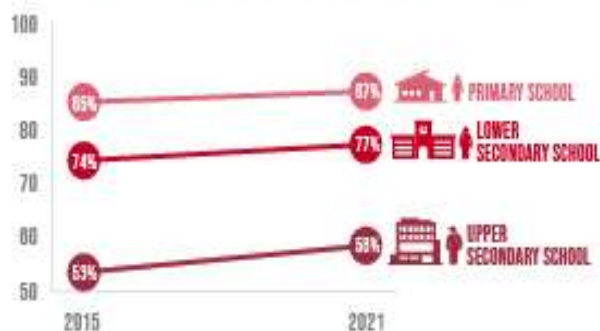


THE PANDEMIC

CAUSED LEARNING LOSSES IN **4 IN 5** OF 104 COUNTRIES STUDIED

## PRIMARY AND SECONDARY SCHOOL COMPLETION RATES ARE **RIISING**, BUT THE PACE IS SLOW AND UNEVEN

COMPLETION RATES



LOW- AND LOWER-MIDDLE-INCOME COUNTRIES FACE A NEARLY

**\$100 BILLION**

**ANNUAL FINANCING GAP**

TO REACH THEIR EDUCATION TARGETS



**Mr. Ashok Kumar Rathour**

Adhyaksh

Janbhagidari Samiti Govt. College Jaithari, Anuppur (M.P.)

## Forward



**Dear Esteemed Members of Government College Jaithari,**

As the Adhyaksh of the Janbhagidari Samiti of Government College Jaithari, District Anuppur, Madhya Pradesh, it gives me immense pleasure to present this foreword to our comprehensive College Policy. Since our institution's establishment in 2012, we have been on a journey of growth, learning, and community engagement. This policy document marks another significant milestone in our college's development.

The Janbhagidari Samiti, or Public Participation Committee, plays a crucial role in bridging the gap between the college and the community. Our committee's vision aligns perfectly with the college's mission to provide quality education while fostering a sense of social responsibility among our students.

This College Policy is a testament to our collective efforts to create an institution that not only excels in academics but also prepares students to be responsible citizens. It encompasses various aspects of college life, from academic standards to community outreach programs, reflecting our commitment to holistic education.

I urge all stakeholders - students, faculty, staff, and community members - to embrace this policy wholeheartedly. It is through your active participation and adherence to these guidelines that we can truly realize the potential of our institution.

As we move forward, let us remember that the strength of our college lies in the spirit of 'Janbhagidari' - public participation. This policy is not just a document, but a shared vision for our college's future. Together, we can build an educational institution that serves as a beacon of knowledge and social progress in our region.

I look forward to your continued support and cooperation in implementing this policy and in furthering the growth of Government College Jaithari.

**Sincerely,**

**Mr. Ashok Kumar Rathour  
Adhyaksh- Janbhagidari Samiti  
Govt. College Jaithari  
District Anuppur, (M.P.)**



**Dr. Ramesh Singh Wate**

Principal

Govt. College Jaithari, Anuppur (M.P.)

## Forward



**Dear Students, Faculty, and Staff,**

As the Principal of Government College Jaithari, District Anuppur, Madhya Pradesh, it is my privilege to present our comprehensive College Policy. This document serves as a cornerstone for our institution, outlining our vision, mission, and the guiding principles that shape our academic environment.

Our college policy is designed to foster an atmosphere of academic excellence, personal growth, and social responsibility. It reflects our commitment to providing quality education while nurturing the diverse talents of our students. The policy encompasses various aspects of college life, including academic standards, code of conduct, extracurricular activities, and community engagement.

I encourage all members of our college community to familiarize themselves with this policy. It is not merely a set of rules, but a roadmap for our collective success. By adhering to these guidelines, we create a harmonious and productive learning environment that benefits everyone.

As we move forward, let us embrace these policies with enthusiasm and dedication. Together, we can build a college that not only imparts knowledge but also shapes responsible citizens who will contribute positively to society.

I look forward to working with all of you in upholding the high standards set forth in this policy and in continually striving for excellence in all our endeavors.

**Sincerely,**

**Dr. Ramesh Singh Wate**  
**Principal**  
**Govt. College Jaithari**  
**District-Anuppur (M.P.)**

# Govt. College Jaithari, Anuppur M.P.

## Department of Higher Education M.P.

### Advance and Slow Learners Policy

#### Introduction

The Indian classroom is a diverse environment where students of various abilities, socio-cultural, and techno-economic backgrounds come together. This policy paper, recognized as the "**Policy on Advanced and Slow Learners**" of Govt. College Jaithari, Anuppur M.P.-484330, aims to address the unique needs of both advanced and slow learners, ensuring their academic and personal success while also supporting average performers.

#### Objectives

**The primary objectives of this policy are to:**

- Create an inclusive and supportive learning environment for all students.
- Develop strategies and scientific implementations to cater to the specific needs of advanced and slow learners.
- Encourage advanced learners to achieve excellence and motivate slow learners to improve their performance.
- Balance the curriculum to ensure that average performers are not left behind.

#### Strategies for Advanced Learners

- **Enrichment programs:** Offer supplemental learning materials, activities, and projects to challenge advanced learners and promote deeper understanding.
- **Mentorship:** Pair advanced learners with mentors who can guide and inspire them to excel in their chosen fields.
- **Opportunities for leadership and collaboration:** Encourage advanced learners to lead group projects or participate in collaborative learning experiences to foster teamwork and leadership skills.
- **Career guidance:** Provide career counseling and resources to help advanced learners explore and plan for their future careers.

#### Strategies for Slow Learners

- **Remedial programs:** Offer additional classes, tutoring, or learning materials to help slow learners catch up to their peers.

- **Individualized learning plans:** Develop personalized learning plans that address the specific needs and learning styles of slow learners.
- **Monitoring and feedback:** Regularly assess the progress of slow learners and provide constructive feedback to help them improve their performance.
- **Emotional and social support:** Encourage a supportive classroom environment that promotes the emotional and social well-being of slow learners.

### Support for Average Performers

- **Differentiated instruction:** Employ teaching methods that cater to the diverse learning needs of all students in the classroom.
- **Opportunities for growth:** Provide resources and opportunities for average performers to enhance their skills and knowledge.
- **Encouragement and recognition:** Acknowledge the achievements of average performers and encourage them to continue striving for improvement.

### Implementation and Monitoring

Teaching departments are responsible for developing and implementing the strategies outlined in this policy. The College will regularly assess the effectiveness of these strategies and make necessary adjustments as needed to ensure the continued academic success of all students.

### Conclusion

The Policy on Advanced and Slow Learners at the college aims to create an inclusive and supportive learning environment that recognizes and addresses the unique needs of all students. By implementing these strategies, the College hopes to empower advanced and slow learners to achieve their full potential and foster the success of all students.

**Prepared By:- Mrs. Rama Vishwakarma**

**Verified By:- Mr. Gajendra Kumar Singh**

**Coordinator IQAC  
Govt. College Jaithari**

**Principal  
Govt. College Jaithari  
Anuppur (M.P.) 484330**